



HOW MUCH?

What are the costs associated with Making & Supporting a Match?



\$160

VOLUNTEER RECRUITMENT

- Partnerships
- Advertising
- Events & Fairs



\$120

FAMILY ENROLLMENT

Inquiry, Child & Parent Interviews, Assessment & Approval

\$240

COST PER VOLUNTEER

Orientation, Interview, Background and Reference Checks, Assessment, Approval & Training



\$100

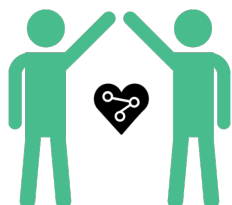
MATCH MAKING & INTRODUCTIONS

File reviews, information sharing, facilitating 1st Meeting between the Big, Little, Family & BBBS Staff

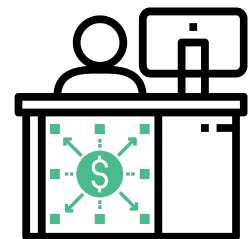


\$500

SUPPORTING THE MATCH



Match Support Specialists foster relationship development and safety, & help plan group activities for Matches and families



\$180

OPERATIONAL COSTS

- Facilities & Supplies
- Liability Insurance
- Communication
- Technology
- Staff Development